

MONTAGEANLEITUNG



Version 16.6

Modell-Nr.

12080

ART.-NR. FRONT KORPUS

12082 **Rot** (ähnl. RAL 3002) Silber

12087 **Ultramarinblau** (RAL 5002) Silber

12086 Silber **Schwarz** (RAL 9005)

Friedrich Küpper GmbH
Friedrich-Küpper-Weg
54570 Berlingen
Deutschland

Telefon +49 (0) 65 91 - 95 42 0
Telefax +49 (0) 65 91 - 95 42 17
E-Mail info@friedrich-kuepper.de
Internet www.friedrich-kuepper.de

EINZELTEILE / PIECES

1× **A**

772 mm × 475 mm

Art.-Nr. E0154 (Silber/silver)
Art.-Nr. E0155 (Schwarz/black)



1× **C**

1057 mm × 473 mm

Art.-Nr. E0189 (Silber/silver, mit Logo)
Art.-Nr. E0190 (Schwarz/black, mit Logo)



1× **B**

772 mm × 475 mm

Art.-Nr. E0165 (Silber/silver)
Art.-Nr. E0166 (Schwarz/black)



1× **D**

1057 mm × 473 mm

Art.-Nr. E0177 (Silber/silver, ohne Logo)
Art.-Nr. E0178 (Schwarz/black, ohne Logo)



1× **F**

505 mm × 450 mm

Art.-Nr. E0208 (Silber/silver)
Art.-Nr. E0209 (Schwarz/black)



1× **E**

985 mm × 480 mm

Art.-Nr. E0198 (Silber/silver)



1× **K**

403 mm × 468 mm

Art.-Nr. E0230 (Silber/silver)
Art.-Nr. E0227 (Rot/red)
Art.-Nr. E0229 (Blau/blue)



1× **Y**

1200 mm × 600 mm

Art.-Nr. E0255



1× **L**

400 mm × 25 mm

Art.-Nr. E0233 (Silber/silver)
Art.-Nr. E0234 (Schwarz/black)



3× **J**

450 mm × 120 mm

Art.-Nr. E0224 (Silber/silver)



3× **H**

450 mm × 445 mm

Art.-Nr. E0215 (Silber/silver)



3× **I**

470 mm × 130 mm

Art.-Nr. E0221 (Silber/silver)
Art.-Nr. E0218 (Rot/red)
Art.-Nr. E0220 (Blau/blue)



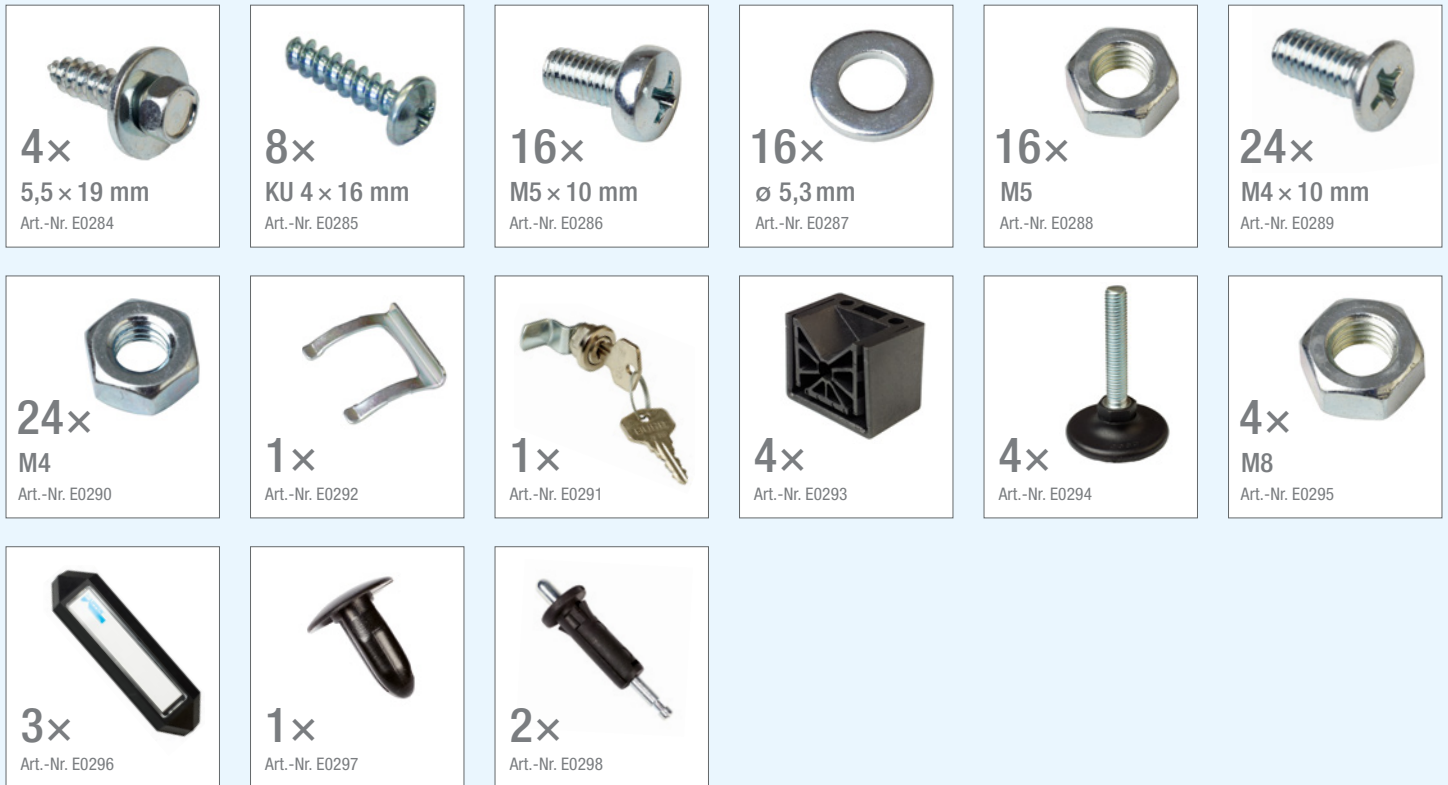
3× **X**

450 mm × 20 mm

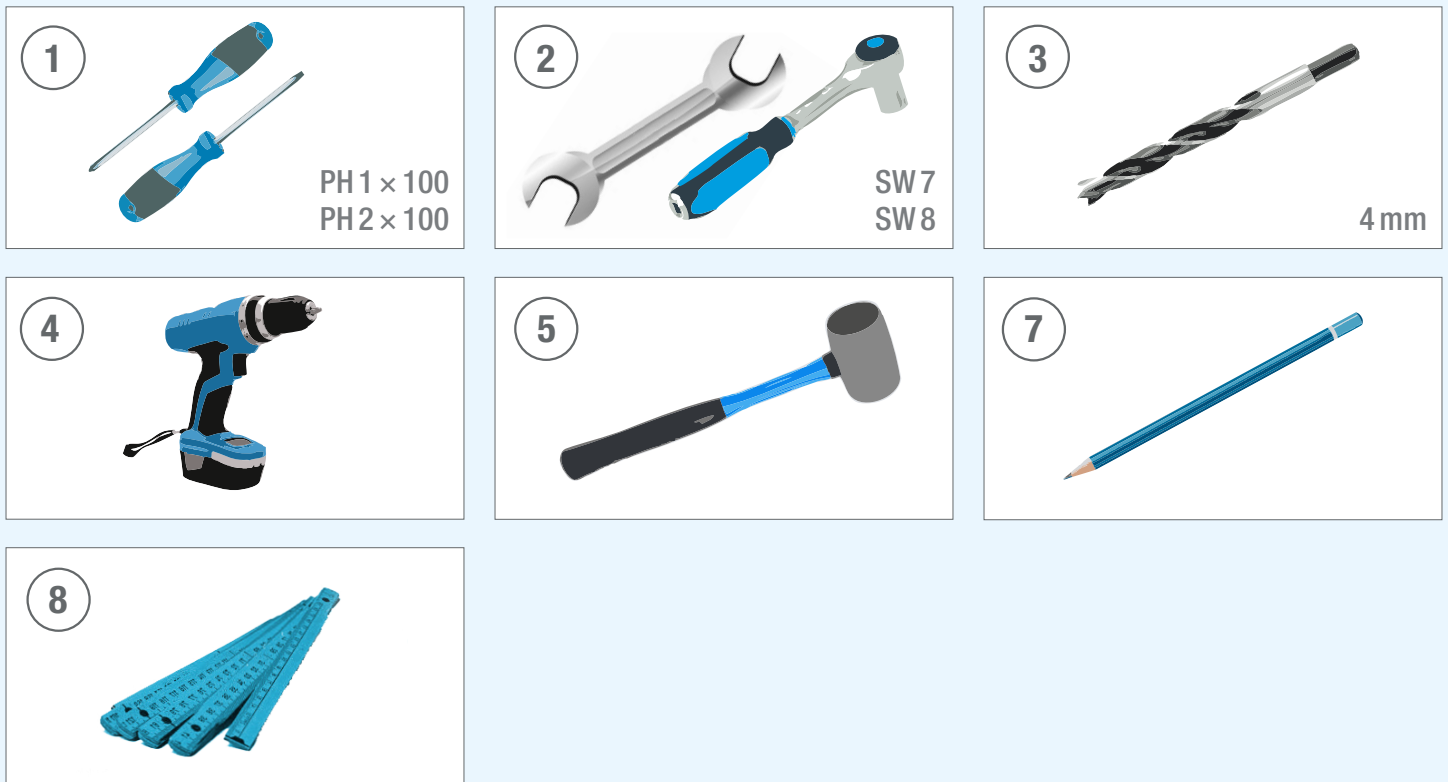
Art.-Nr. E0252 (Schwarz/black)



BEUTELINHALT / BAG CONTENT



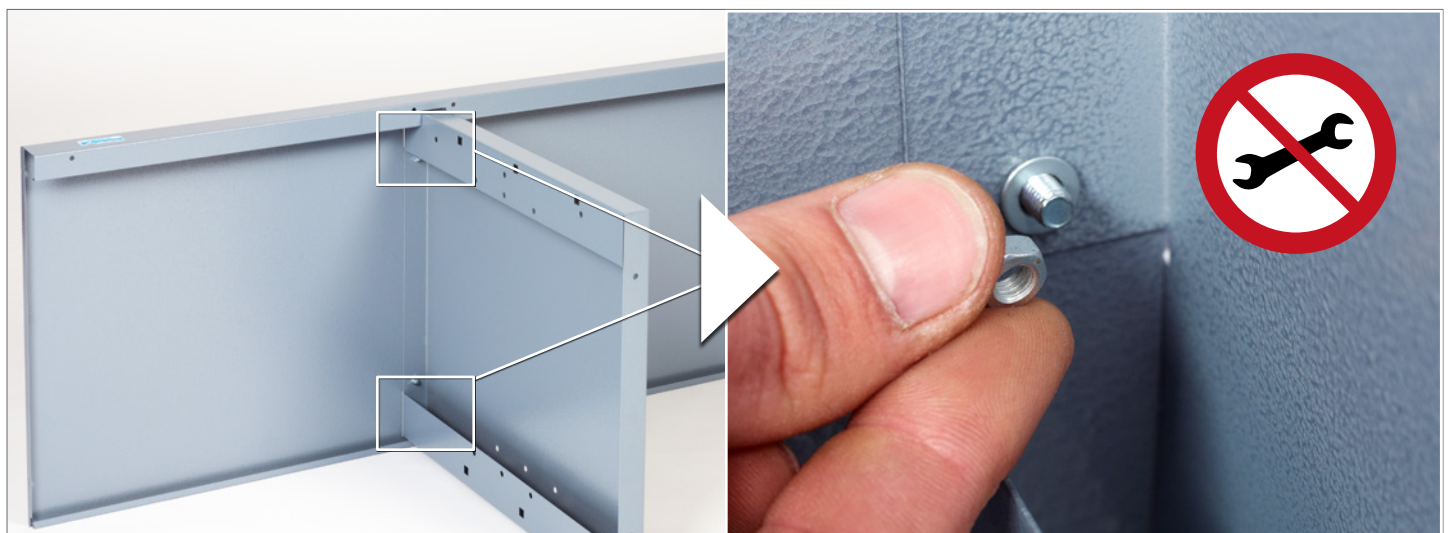
BENÖTIGTES WERKZEUG / NEEDED TOOLS



1. WICHTIG / IMPORTANT



2.  2 x M5  2 x M5 x 10  2 x 5,3 MM



3.



4.

2 × M5 2 × M5 × 10 2 × 5,3 MM

② SW 8 ① PH2 × 100



ZU SCHRITT 2. / IN ADDITION TO STEP 2.

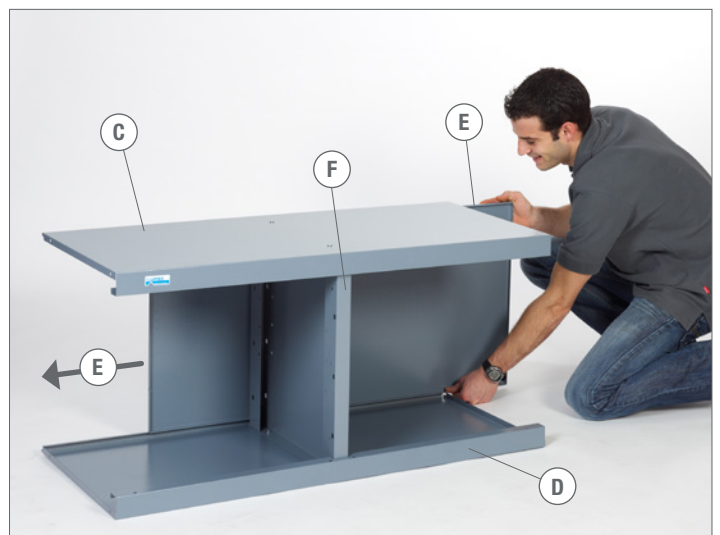
② SW 8 ① PH2 × 100



5.



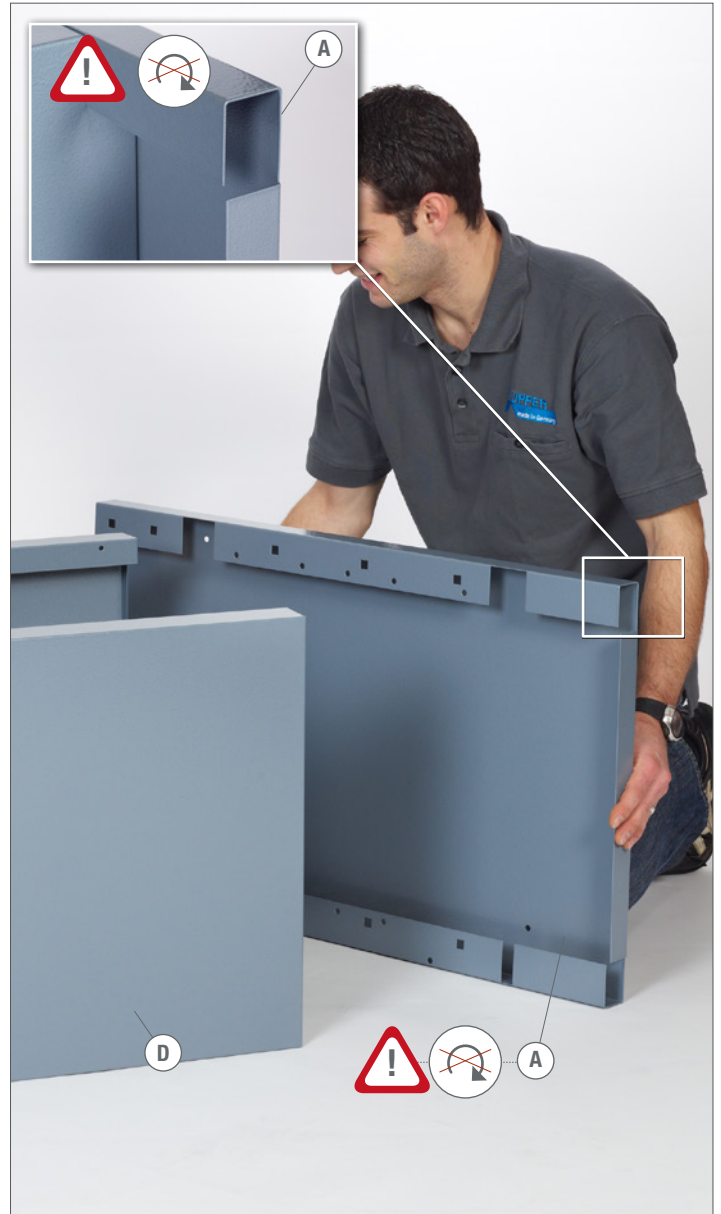
6.



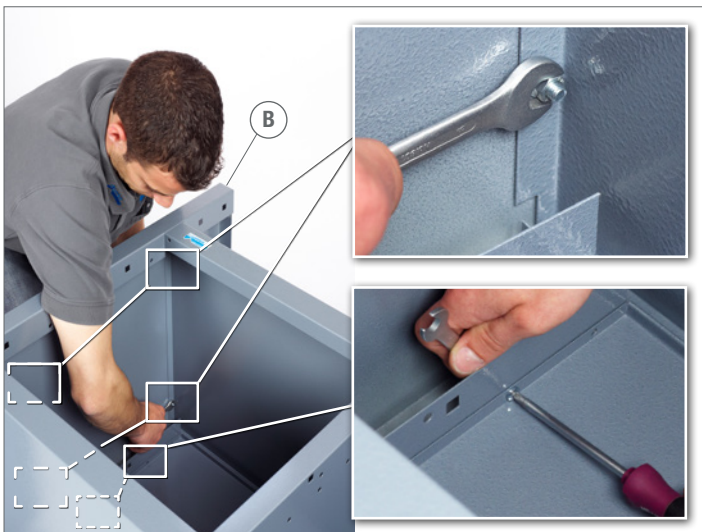
7. WICHTIG / IMPORTANT



8. WICHTIG / IMPORTANT



9. 6x5 6xM5x10 6x5,3MM 2 SW8 1 PH2x100



10. 6xM5 6xM5x10 6x5,3MM 2 SW8 1 PH2x100



11. 4x 



12. 4x M8  4x  ⑤ 



13. 2x KU4x16  1x  ①  PH2x100



14.  2x



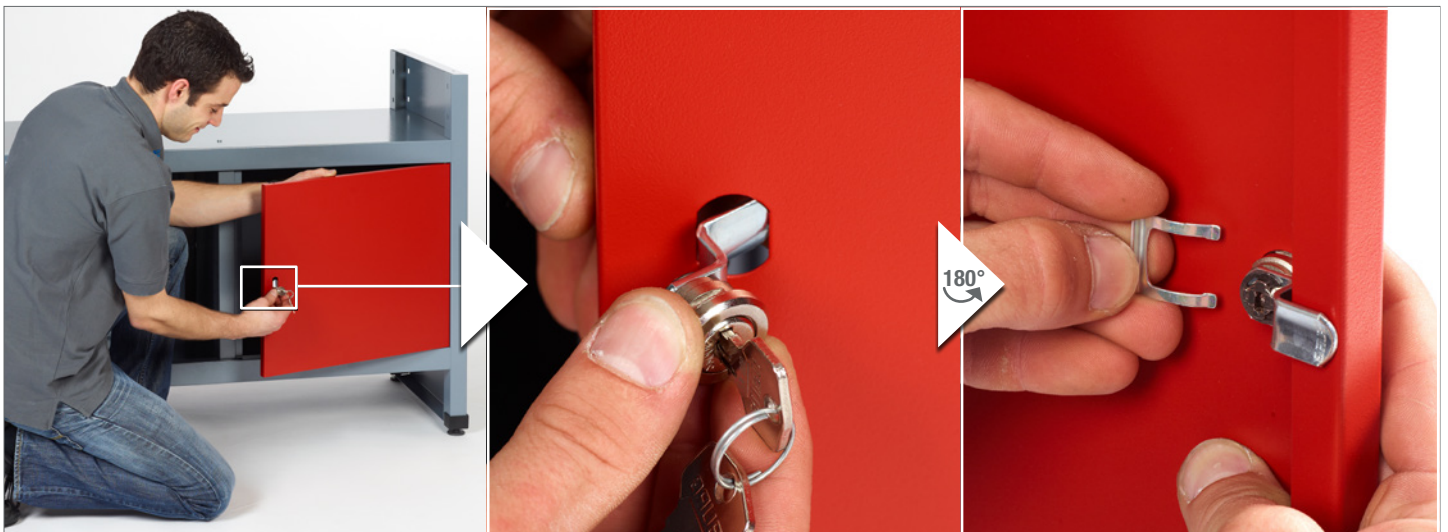
15.



16.



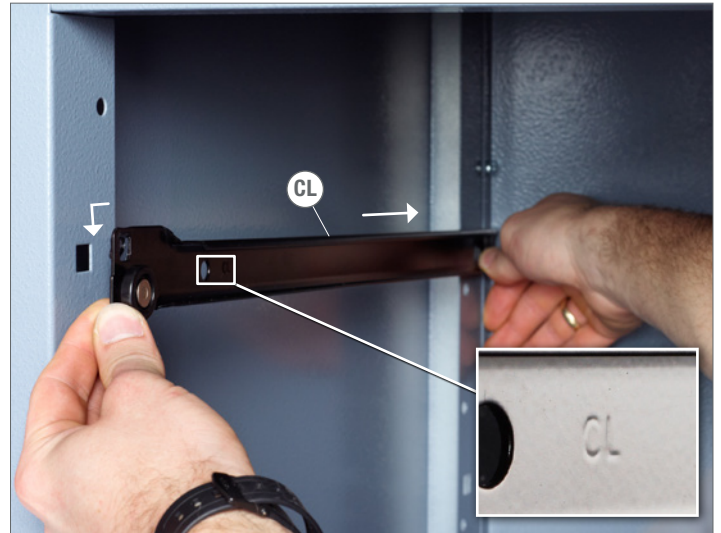
17.  1x  1x



18. $\text{\textcircled{X}}$
3 x CR



19. $\text{\textcircled{X}}$
3 x CL



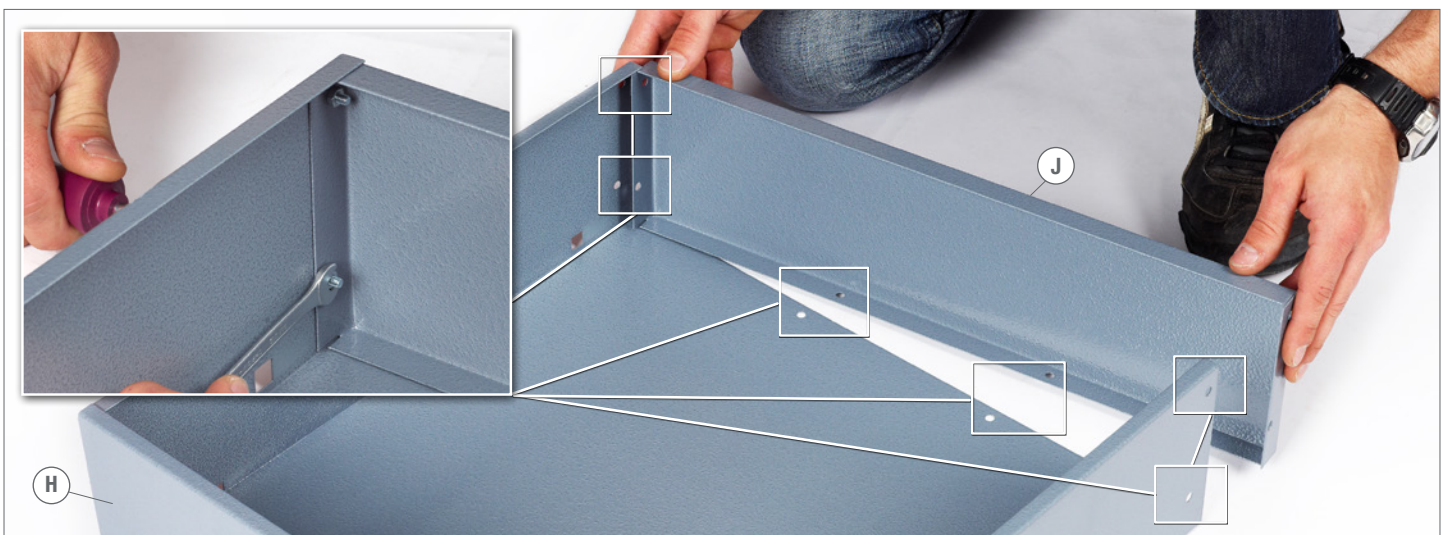
20. $\text{\textcircled{H}}$ $\text{\textcircled{H}}$
6 x M4 6 x M4 x 10

$\text{\textcircled{2}}$ $\text{\textcircled{1}}$
SW7 PH1 x 100

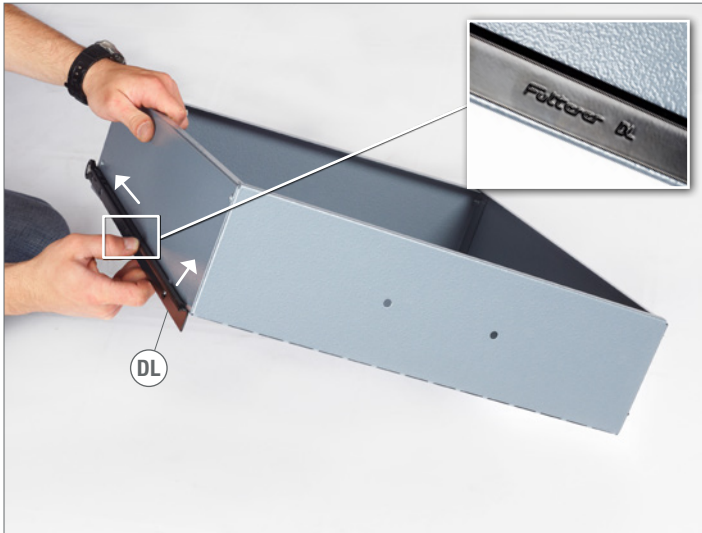


21. $\text{\textcircled{H}}$ $\text{\textcircled{H}}$
18 x M4 18 x M4 x 10

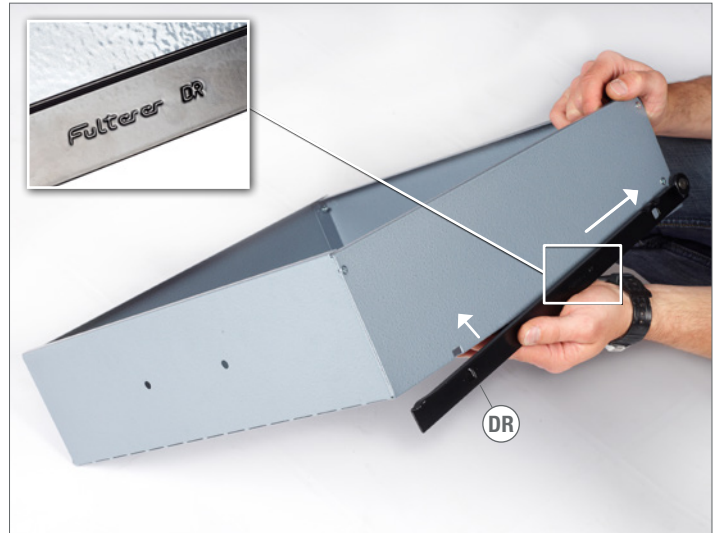
$\text{\textcircled{2}}$ $\text{\textcircled{1}}$
SW7 PH1 x 100



22.  1 x DL



23.  1 x DR



24.



25.  6 x KU 4 x 16 3 x  ①  PH 2 x 100



26.



27.

8  7 



28.

4  3 



29.

4 × 5,5 × 19

2  SW 8  SW 8



